



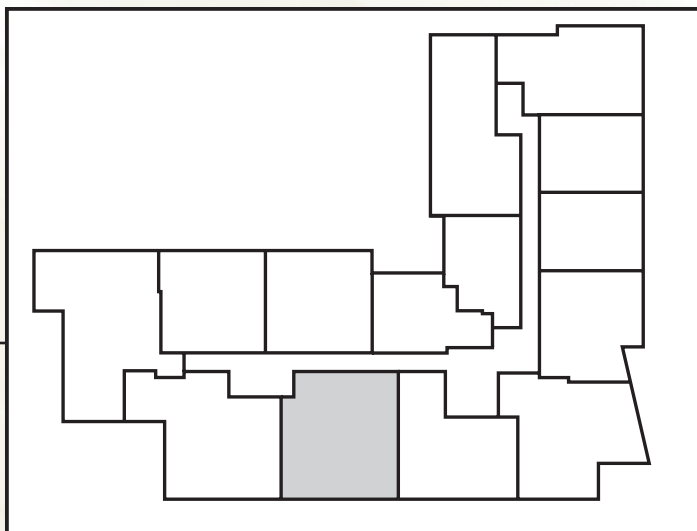
A striking reflection of you

Building

- Striking contemporary architecture by notable Shalom Baranes Associates
- Exterior art glass by internationally acclaimed designer James Carpenter
- Magnificent views of Washington, DC and Maryland
- Ample controlled-access, underground garage parking with direct elevator service to residences
- Guest parking available

Residences

- Many exciting contemporary floor plans
- Expansive, floor-to-ceiling windows
- Generous balcony, terrace or French balcony with most homes
- Rooftop terraces for penthouse residences
- Solid wood entry doors
- Ceiling heights up to 10 feet
- Hardwood flooring in living areas
- Mantled natural gas fireplaces in select residences
- Full sized washer and dryer, some stacked
- Wired for high-speed internet access, multiple phone lines, cable and satellite television
- Numerous opportunities to customize your home with the selection of finishes and upgrades



The Schubert

Levels 4, 5, 6, 7 • 2 bedrooms, 2.5 bathrooms, den

Renderings and Floorplans are depicted for illustrative purposes only. Details and dimensions may differ from actual plans. Some architectural features which appear may be optional. Check with your sales associate for further details. Adagio reserves the right to make changes without prior notice.